



## DC/DC 铁路机车整机工控电源

### JWDKR 铁路机车整机工控电源--35W 双路输出

JWDKR Railway locomotive Switching Power Supply--35W dual Output dual Output

#### 典型性能 Typical Performance

- ◆外形尺寸: 110\*78\*36 (mm)  
Dimension: 110\*78\*36 (mm)
- ◆宽输入电压范围)  
Wide range input voltage
- ◆高效率、高功率密度、低纹波  
High efficiency、High power density、Low ripple & noise
- ◆金属外壳, 八面屏蔽,  
Metal shell, Eight face shield
- ◆安规: EN60950  
Ann rules: EN60950



#### 输入特性 Input Features

输入电压范围 Input voltage range	标称 110V Nominal voltage 110V 标称 72V Nominal voltage 72V	66~160VDC  45~135VDC
-------------------------------	------------------------------------------------------------------	----------------------------

#### 输出特性 Output Features

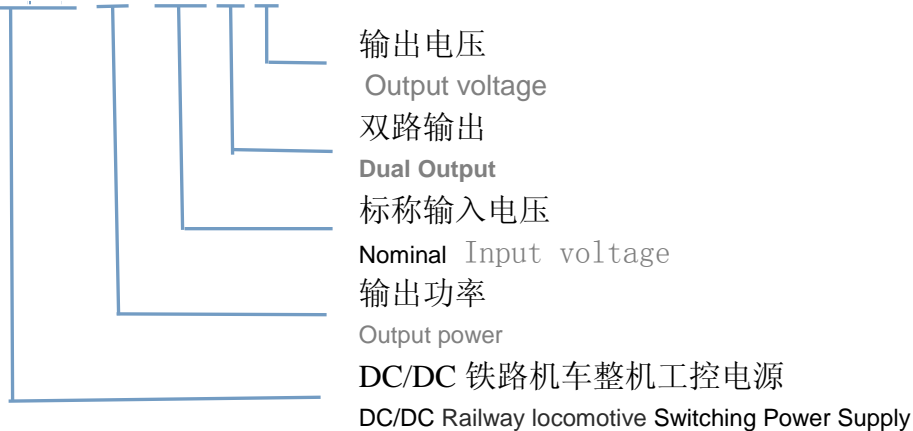
输出电压精度 Voltage tolerance	标称电压 Nominal voltage	$V_{01} \cong \pm 1\%$ (3.3V、5V $\cong \pm 2\%$ ), $V_{02} \cong \pm 5\%$
电压调整率 Line regulation (full load)	输入电压从低端到高端变化 Change of input voltage from lowend to highend	$V_{01} \cong \pm 0.5\%$ , $V_{02} \cong \pm 1.5\%$
负载调整率 Load regulation	20%~100%负载变化 20%~100% Load change	$V_{01} \cong \pm 0.5\%$ , $V_{02} \cong \pm 3\%$
温度系数 Temperature coefficient		$\pm 0.02\%/^{\circ}\text{C}$
过功率保护 Output overload Protection		115~150%额定功率, 自恢复 115~150% rated output power, auto recovery
短路保护 Short Circuit Protection		长期, 自恢复 Long-term, auto recovery
过冲幅度 Overshoot	25%额定负载变化 25% rated load change	$\cong 500\mu\text{S}$
	$\Delta V_{01} / V_{01}$	$\cong \pm 5.0\%$

#### 一般特性 General Features

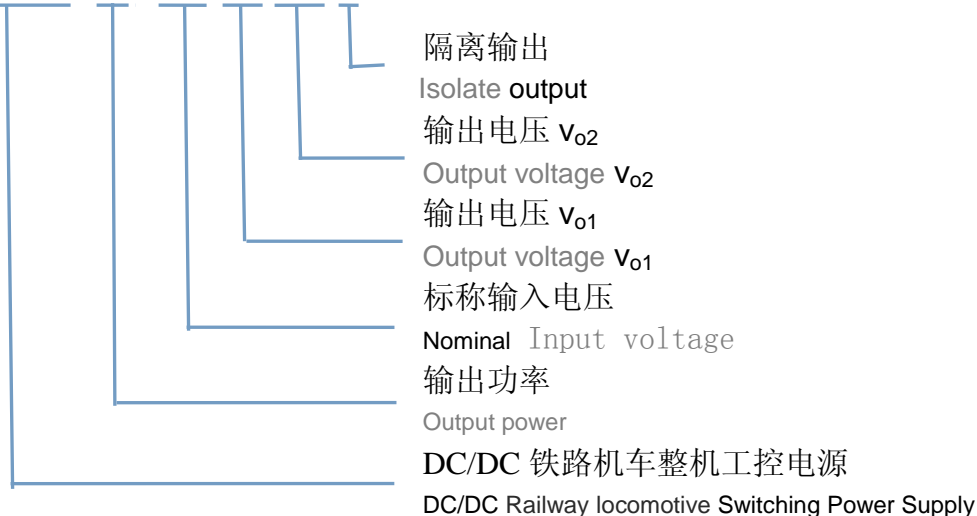
隔离耐压 Withstand voltage	输入对输出、输入对地 I/P-O/P、I/P-F/G 输入对地 I/P-F/G 输出对输出(隔离) O/P-O/P( (1分钟, 漏电流 $\cong 5\text{mA}$ ) (1Mintute leakage current) $\cong 5\text{mA}$ )	1500VAC  500VAC  500VDC
绝缘电阻 Isolation resistance	500V	$\cong 50\text{M}\Omega$
MTBF	环境 25°C Environment 25°C	$2.0 \times 10^5$ Hrs
工作温度 Operating temperature	55°C以上降额使用 Above 55°C derating make	-25°C~70°C (-40°C~70°C)
储存温度 Storage temperature		-40°C~85°C
工作相对湿度 Operating humidity	无凝露及结冰现象 (non condensing)	10%~90%RH
储存相对湿度 Storage humidity	无凝露及结冰现象 (non condensing)	5%~95%RH
冷却方式 Cooling method		自然冷却 Convection

## 命名方式 Naming Rules

### JWDKR 35- 110 D 5



### JWDKR 35- 110 S5 S12 I



## 产品选型 Product selection

产品型号 Model No.	输入电压 Input voltage V <sub>in</sub>	输出电压 Output voltage V <sub>o</sub>	输出电流 Output current I <sub>o</sub>	输出电压精度 Output voltage tolerance	纹波噪声 R&N V <sub>(P-P)mV</sub>	效率 Efficiency
JWDKR35-110D5	66~160V	+5V	0.3~3.5A	±2%	80mV	77%
		-5V	0.3~3.5A	±5%	100mV	
JWDKR35-110D12		+12V	0.2~1.5A	±1%	100mV	81%
		-12V	0.2~1.5A	±3%	100mV	
JWDKR35-110D24		+24V	0.1~0.7A	±1%	150mV	84%
		-24V	0.1~0.7A	±3%	150mV	
JWDKR35-110S5S5I		+5V	0.5~5.0A	±2%	80mV	77%
		+5V	0.2~2.0A	±5%	100mV	
JWDKR35-110S5S12I		+5V	0.5~5.0A	±2%	80mV	78%
		+12V	0.1~1.0A	±5%	100mV	
JWDKR35-110S12S12I		+12V	0.2~2.5A	±1%	120mV	81%
		+5V	0.1~1.0A	±5%	100mV	
JWDKR35-110S12S24I	+24V	0.2~1.5A	±1%	150mV	83%	
	+5V	0.1~1.0A	±5%	100mV		
JWDKR35-72D5	45~135V	+5V	0.3~3.5A	±2%	80mV	77%
		-5V	0.3~3.5A	±5%	100mV	
JWDKR35-72D12		+12V	0.2~1.5A	±1%	100mV	81%
		-12V	0.2~1.5A	±3%	100mV	
JWDKR35-72D24		+24V	0.1~0.7A	±1%	150mV	84%
		-24V	0.1~0.7A	±3%	150mV	
JWDKR35-72S5S5I		+5V	0.5~5.0A	±2%	80mV	77%
		+5V	0.2~2.0A	±5%	100mV	
JWDKR35-72S5S12I		+5V	0.5~5.0A	±2%	80mV	78%
		+12V	0.1~1.0A	±5%	100mV	
JWDKR35-72S12S12I		+12V	0.2~2.5A	±1%	120mV	81%
		+5V	0.1~1.0A	±5%	100mV	
JWDKR35-72S12S24I	+24V	0.2~1.5A	±1%	150mV	83%	
	+5V	0.1~1.0A	±5%	100mV		

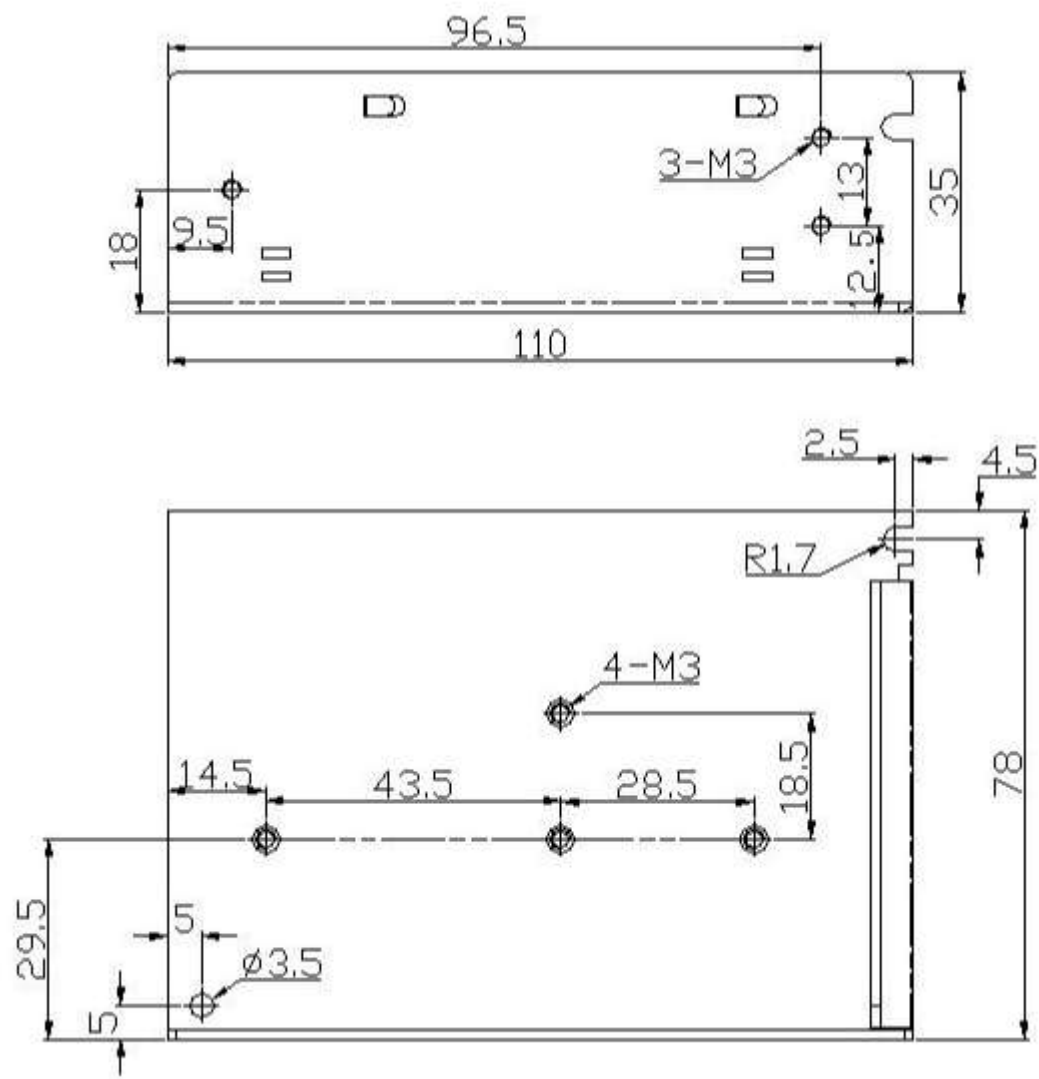
注：1、纹波噪声测试方法：使用一根 12” 双绞线，在终端并联 0.1uF 和 47uF 电容，在 20MHz 带宽下测试。

2、因篇幅有限，以上只是部分产品列表，若需列表以外产品，请与本公司销售部联系。

Note: 1、Ripple & noise are measured at 20MHz of bandwidth by using a 12”twisted pair-wire terminatedwith a 0.1uF & 47uF parallel capacitor.

2、Due to space limitations ,the above list is only for some products, If other than a list of products, please contact the Company's sales department..

安装尺寸图 Mechanical Data



注：电源安装尺寸如与选型手册不符，应以实物标签上的标注为准。

Note: Power mechanical data does not match with the hand book, please refer to the actual item.